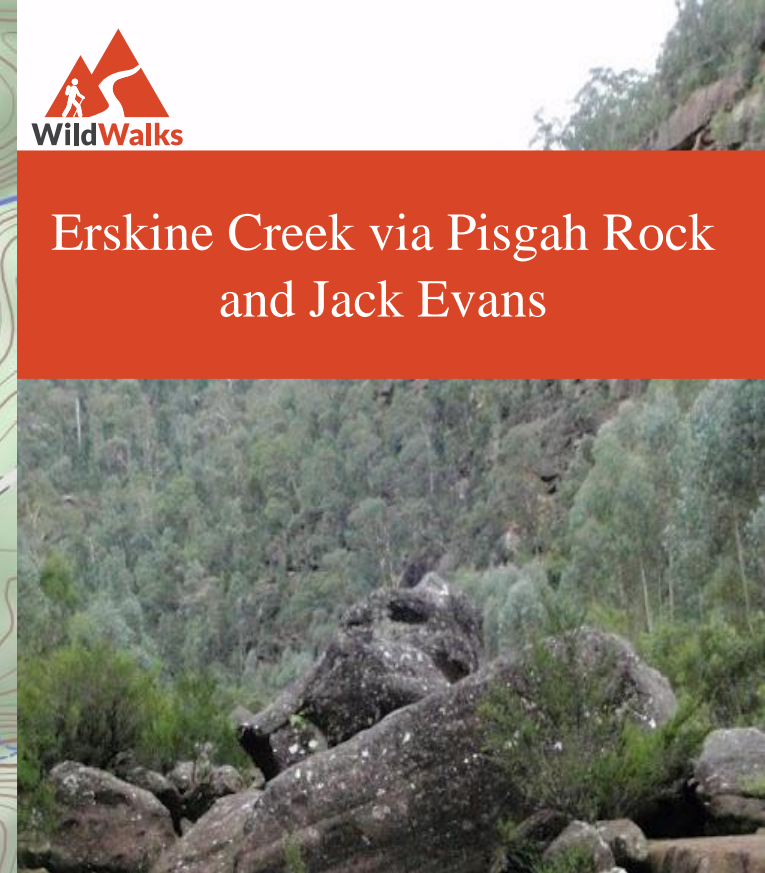
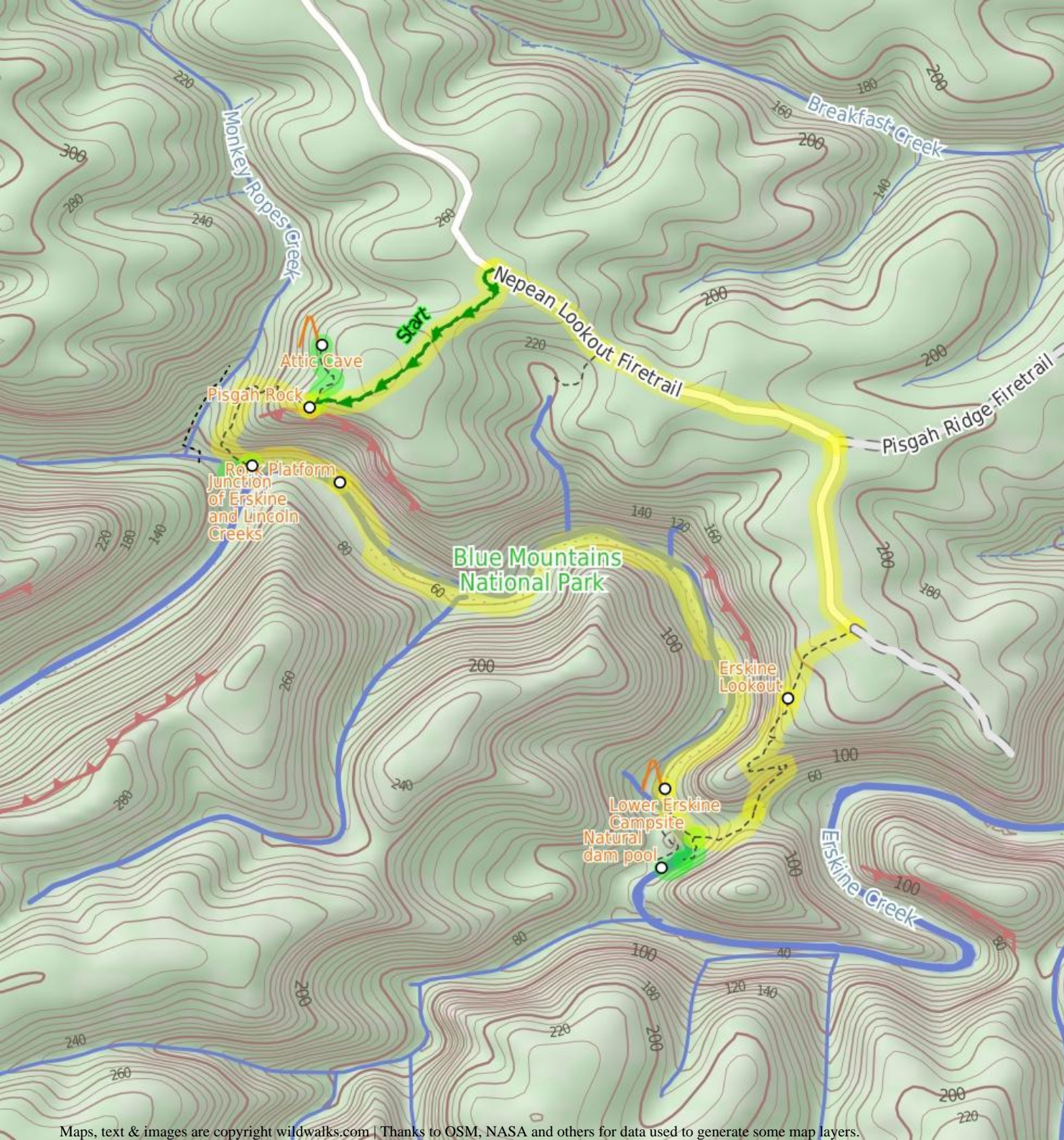


## Erskine Creek via Pisgah Rock and Jack Evans



4 hrs 30 mins

Very experienced 

7.1 km Circuit

421m

This walk visits some great lookouts and explores the lower section of Erskine Creek. Most of the walk along Erskine Creek is off track and the bush is quite thick in places. A great walk for people wanting to explore a remote area of the lower Blue Mountains National Park. You could make this an overnight walk and stay at Lower Lincoln Creek campsite.

271m

38m

Blue Mountains National Park

## Attic Cave

Attic Cave, near Pisgah Rock in the lower blue mountains is a large sandstone overhang. The cave has been used by walkers as an overnight camp for many decades. The cave could comfortably sleep about 5 people. There is a log book in a tin cake box on the rock shelf, making for some interesting reading, and awaiting your story. There is a fire circle, and the cave is reasonably well protected from the weather. The name Attic Cave is said to have come from the hole, a shelf, in the top of the cave, forming an attic.

## Pisgah Rock

Pisgah Rock, is a short walk from Nepean Lookout Fire Trail in the lower Blue Mountains, and provides excellent views up Erskine Creek Gorge. The informal lookout is not fenced, and the surface is uneven with large crevasse like cracks. The view is simply amazing, with great views right up the middle of Erskine Creek Gorge. There are also great views to the left, down Erskine Creek Gorge and across the flats of the southern parts for greater Sydney. The rock presumably derives its name from the height point on Mount Nebo, where the Bible reports Moses seeing the promised land for the first time. In Hebrew pisgah refers to a high place. This Pisgah Rock is very much a high place, with great views.

## Junction of Erskine and Lincoln Creeks

The junction of Erskine and Lincoln Creeks, in the Blue Mountains National park, occurs at a large rock platform. The rock platform contains many water holes, a few large square boulders and a few short cascades. There are breath taking views up looking Erskine Creek Gorge. Looking up to the escarpment, to the north east, there is a view of Pisgah Rock. This area floods after rain, but when water levels are normal, this can be a lovely place to rest and enjoy the creeks and gorge.

## Rock Platform

This is a rock platform on Erskine creek about 200m downstream from the junction with Lincoln Creek. The area does flood so depending on water levels this is usually a large rock platform with some interesting water holes, and a lovely cascade flowing into a shallow pool. Although this lacks the majestic view up Erskine Creek (found a short distance upstream), this spot does provide an open spot, great for a snack, lunch and to rest.

## Before You walk

Bushwalking is fun and a wonderful way to enjoy our natural places. Sometimes things go bad, with a bit of planning you can increase your chance of having an enjoyable and safer walk. Before setting off on your walk check

- 1) Weather Forecast ([BOM Central Tablelands District](#))
- 2) Fire Dangers ([Greater Sydney Region](#))
- 3) Park Alerts ([Blue Mountains National Park](#))
- 4) Research the walk to check your party has the skills, fitness and equipment required
- 5) Agree to stay as a group and not leave anyone to walk solo

## Think before you TREK

The 'Think before you TREK' program developed by NSW Police & NPWS promotes the benefits of planning ahead for your bushwalking trip by using an easy to remember acronym:

- T** Take adequate supplies of food, water, navigation and first aid equipment.
- R** Register your planned route and tell friends and family when you expect to return.
- E** Emergency beacon (PLB's) should be carried on walks with significant gaps in mobile coverage (check terrain profile).
- K** Keep to your planned route and follow the map and walking trails.

## Topo Maps

The maps provided on wildwalks are helpful, but there are times where you may need maps covering a broader area. Maps that cover this walk include;

**1:25 000 Map Series:**90303N PENRITH

**1:100 000 Map Series:**9030 PENRITH

## Grade

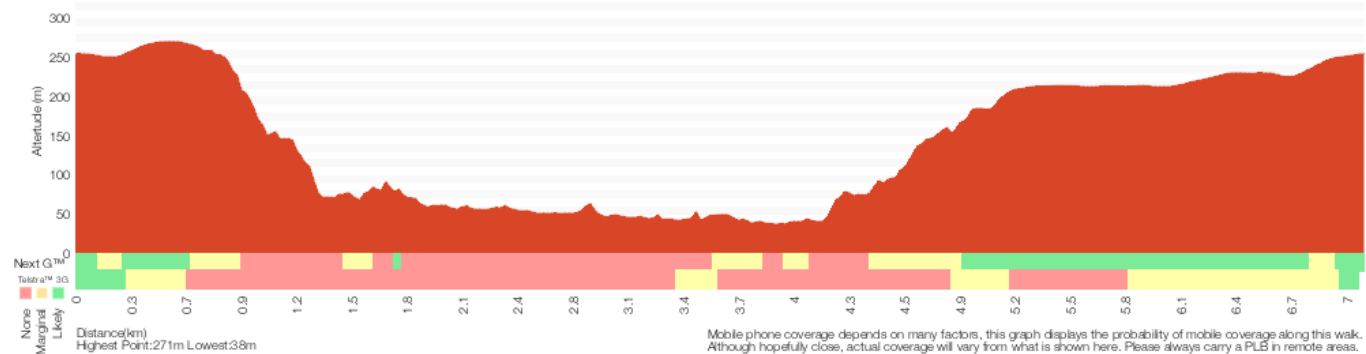
This walk has been graded using the AS 2156.1-2001. The overall grade of the walk is determined by the highest classification along the whole track.



**Grade 6/6**  
Very experienced only

<b>Length</b>	7.1 km Circuit
<b>Time</b>	4 hrs 30 mins
<b>Quality of track</b>	Off track (no visible track at times) (6/6)
<b>Signs</b>	No directional signs (5/6)
<b>Experience Required</b>	Very high level of bushwalking experience recommended (6/6)
<b>Weather</b>	Forecast, unforecast storms and severe weather may impact on navigation and safety (4/6)
<b>Infrastructure</b>	No facilities provided (5/6)

**\* This walk passes through very remote areas and sections have no visible track. At least one person in your group should have training and experience in off track walking and navigation. Even with these notes and a GPS these extra skills and equipment are required.**



### Are you ready to have fun?

Please ensure you and your group are well prepared and equipped for all possible hazards and delays. Check park closures, weather information and Fire Danger Rating before setting out. Optional side trips and alternate routes noted are not included in this walk's overall grade, length or time estimate. Please allow extra time for resting and exploring areas of interest. The authors, staff and owners of wildwalks take care in preparing this information but will not accept responsibility for any inconvenience, loss or injury you may experience. Please take care, have fun - Happy Walking. **Experienced walkers only: This walk passes through very remote areas and sections have no visible track. At least one person in your group should have training and experience in off track walking and navigation. Even with these notes and a GPS these extra skills and equipment are required.**

**Getting there** Traveling by car is the only practical way to get to Pisgah Rock track head (gps: -33.8285, 150.5717). Car: A park entry fee is required for driving into the park.

This is a circuit, so you will finish back at the start.

Find up to date and more information including; travel directions, weather, park closures and walker feedback at <http://wild.tl/cevpraj>

### 0 | Pisgah Rock track head

*(760 m 14 mins)* From the Pisgah Rock car park (2.2km further along Nepean Lookout Fire Trail from the Oaks Picnic Area), this walk follows the 'Pisgah Rock 700m' sign along the old management trail. The track meanders through the Eucalypt and Casuarina forest as it climbs a gentle hill and then heads down the other side. The track soon comes to an intersection with a small bush track off to the left, from the intersection there are glimpses of the valley views.

### 0.76 | Optional sidetrip to Attic Cave

*(250 m 6 mins)* Turn right: From the intersection, the walk follows the old management trail that very soon narrows into a bush track as it heads away from the view (keeping the valley to the left). The track then emerges from the bush to cut across a rock shelf and into the scrub again. Once in the gully the track turns left to climb down the 'V' in the rock. At the bottom of the climb the walk heads right under the now obvious sandstone cave. The walk continues following the base of this cliff line along a fairly clear track passing several interesting sandstone overhangs. Soon the track comes to a large overhang and fire circle at Attic camping cave. At the end of this side trip, retrace your steps back to the main walk then Veer right.

### 0.76 | Attic Cave

Attic Cave, near Pisgah Rock in the lower blue mountains is a large sandstone overhang. The cave has been used by walkers as an overnight camp for many decades. The cave could comfortably sleep about 5 people. There is a log book in a tin cake box on the rock shelf, making for some interesting reading, and awaiting your story. There is a fire circle, and the cave is reasonably well protected from the weather. The name Attic Cave is said to have come from the hole, a shelf, in the top of the cave, forming an attic.

### 0.76 | Pisgah Rock Intersection

*(20 m 1 mins)* Veer left: From the intersection this walk takes the short bush track toward the view of the valley. The track comes to the unfenced cliff and great view from the top of Pisgah Rock and a sign posted 'take care when walking near cliffs'.

### 0.78 | Pisgah Rock

Pisgah Rock, is a short walk from Nepean Lookout Fire Trail in the lower Blue Mountains, and provides excellent views up Erskine Creek Gorge. The informal lookout is not fenced, and the surface is uneven with large crevasse

like cracks. The view is simply amazing, with great views right up the middle of Erskine Creek Gorge. There are also great views to the left, down Erskine Creek Gorge and across the flats of the southern parts for greater Sydney. The rock presumably derives its name from the height point on Mount Nebo, where the Bible reports Moses seeing the promised land for the first time. In Hebrew *pisgah* refers to a high place. This Pisgah Rock is very much a high place, with great views.

### 0.78 | Pisgah Rock

*(610 m 21 mins)* Turn right: From the 'take care when walking near cliffs' signpost on Pisgah Rock this walk now follows the rock at the top of the cliff keeping the valley below to the left. After passing a couple of very steep looking cracks in the rock, the faint track comes to a much more gentle looking pass with a large Banksia growing out of it. The walk heads down through this pass. The track turns right and heads down a much steeper climb through the V in the rock. At the bottom of this climb the bush track leads to a small unfenced rock platform. The walk then turns right heading down the couple more climbs then turns left back under the rock platform. The track continues to wind down several more steep rocky climbs following a faint track and cairns. After most climbs the track generally tends left and down hill. After the last climb, the track heads away from the cliff making, tending left heading fairly steeply to an intersection near the junction of Erskine Creek and Lincoln Creek.

### 1.38 | Optional sidetrip to Lower Lincoln Campsite

*(70 m 2 mins)* Turn right: From the intersection, this walk cross Lincoln Creek at the rock pools staying upstream of the small cascade (this may be impassable after rain). On the other side of the creek the walk picks up a faint track heading gently up the ridge. Soon the track opens up into a large campsite with some wonderful grass trees. At the end of this side trip, retrace your steps back to the main walk then Veer right.

### 1.38 | Junction of Erskine and Lincoln Creeks

The junction of Erskine and Lincoln Creeks, in the Blue Mountains National Park, occurs at a large rock platform. The rock platform contains many water holes, a few large square boulders and a few short cascades. There are breath taking views up looking Erskine Creek Gorge. Looking up to the escarpment, to the north east, there is a view of Pisgah Rock. This area floods after rain, but when water levels are normal, this can be a lovely place to rest and enjoy the creeks and gorge.

### 1.38 | Junction of Erskine and Lincoln Creeks

*(260 m 7 mins)* Continue straight: From the intersection, this walk head downstream along Erskine Creek, keeping the creek to the right. After following the indistinct bush track for a short while it leads to an large open rock platform. The walk continues along the rock until coming to the edge of a large pool at the bottom of the cascades.

### 1.64 | Rock Platform

This is a rock platform on Erskine creek about 200m downstream from the junction with Lincoln Creek. The area does flood so depending on water levels this is usually a large rock platform with some interesting water holes, and a lovely cascade flowing into a shallow pool. Although this lacks the majestic view up Erskine Creek (found a short distance upstream), this spot does provide an open spot, great for a snack, lunch and to rest.

### 1.64 | Rock platform

*(2.3 km 51 mins)* Veer left: From the end of the rock platform, the walk heads downstream initially by following the rock fall on the northern bank. There is a faint foot pad that lasts a short while. Find a good place to cross to the other bank (may be impassable after rain), where a rock shelf on the southern bank

make walking easier. After passing the large gully the foot pad has all but disappeared, the walk continues down stream keeping the creek on the left. About half way along the large cliff high on the other side of the creek, the bank on the western side becomes difficult to pass due to another cliff. From here find a good place to cross (may be impassable after rain) and pick up the faint foot pad on the other side. The foot pad continues downstream (now with the creek on the right) and passes a few rock platforms at times. The track becomes more distinct as it gets closer to Jack Evans track. Not far before Jack Evans track the footpad comes to a small campsite with a fire circle on the left.

### 3.91 | Lower Erskine Campsite

A small campsite, just up from the eastern bank of Erskine Creek, a short distance north of where Jack Evans track crosses the creek. The campsite has a small fire circle, and enough space for one maybe two tents. Erskine creek is a handy water supply (treat before drinking).

### 3.91 | Lower Erskine Campsite

*(110 m 2 mins)* Continue straight: From the campsite this walk heads down stream keeping the creek to the right. Following a faint bush track the walk soon comes to an intersection with the Jack Evans Track just above a small sandy beach.

### 4.02 | Int of Jack Evans Track and Erskine Creek

*(100 m 2 mins)* Turn left: From the intersection just above sandy beach on the creek, this walk follows the clear bush track away from the creek and up the gentle hill. The track soon turns right and follows the creek on the right, downstream for a little while. The track then tends left up hill passing through a tunnel of vegetation to emerge onto an intersection with the more distinct Jack Evans and lower Erskine tracks

### 4.12 | Optional sidetrip to Eastern side of natural dam w

*(180 m 7 mins)* Turn right: From the intersection, this walk follows the wider bush track down hill keeping the sound of Erskine Creek to the right, soon the creek is in view. The track soon fades to a become a less distinct bush track leading up the bank away from the creek. The track climbs to a large boulder providing great views of the pool in Erskine Creek. The track then leads down to the natural charcoal deposits and continues along the creek edge to the water depth indicators. (A remote monitoring box is visible up the hill).

Veer left: From the water depth indicators this walk follows the creek down stream keeping Erskine Creek on the right. The faint bush track soon leads to the visible series of large boulders forming a natural dam wall. At the end of this side trip, retrace your steps back to the main walk then Veer right.

### 4.12 | Natural dam pool

A series of very large boulders have formed a natural dam on Erskine Creek, about 170m north of Big Crater Creek. The dam forms a large lovely pool upstream. The pool is used by Sydney Water for measurements, and a water depth indicator is bolted to the rock. The pools is not safe to dive or jump into, there are many submerged objects.

### 4.12 | Int of Jack Evans and the lower Erskine tracks

*(850 m 31 mins)* Veer left: From the intersection this walk follows the wider bush track up the hill past the large gum tree. The track then comes to, and climbs a series of timber steps up to a distinct saddle. The track continues gently up the hill for a short distance to come to an intersection with the faint short cut track off to the right.

Continue straight: From the intersection this walk follows the wider bush track up the gentle hill. The track is narrow in places with a drop off to the right. The track then starts to climb the hill using a series of steps and switch

backs to wind up through the wonderful sandstone outcrops. The track passes a few nice caves and through gaps in the rock. After the last steep section the track comes to a large rock platform on the left (with some great views). The track continues to follow the main path up the hill, and passes a long sandstone wall on the left of the track. Soon after this sandstone wall, the track comes to a wide sandy patch, with an unfenced rock platform and view on the left. This is the Erskine Lookout, an informal unfenced lookout.

#### **4.97 | Erskine Lookout**

This informal and unfenced lookout on Jack Evans Track is in the lower Blue Mountains south west from the end of Nepean Lookout Fire Trail. The lookout is perched high above Erskine Creek and provides wonderful view upstream, and good views downstream. The view down in to the gorge gives a unique perspective of the lower section of Erskine Creek.

#### **4.97 | Erskine Lookout**

*(320 m 8 mins)* Continue straight: From Erskine Lookout, this walk heads up the gentle hill, following the sandy track, keeping the view to the left. The track passes some informal tracks to the left, passes a burnt 'take care when walking near cliffs' sign, and continues up the hill getting a little steeper. The track then comes to a silver information sign about 'Jack Evans Track'. The track then bends left and comes to the car park at the end of the publicly accessible section of the Nepean Lookout Fire Trail.

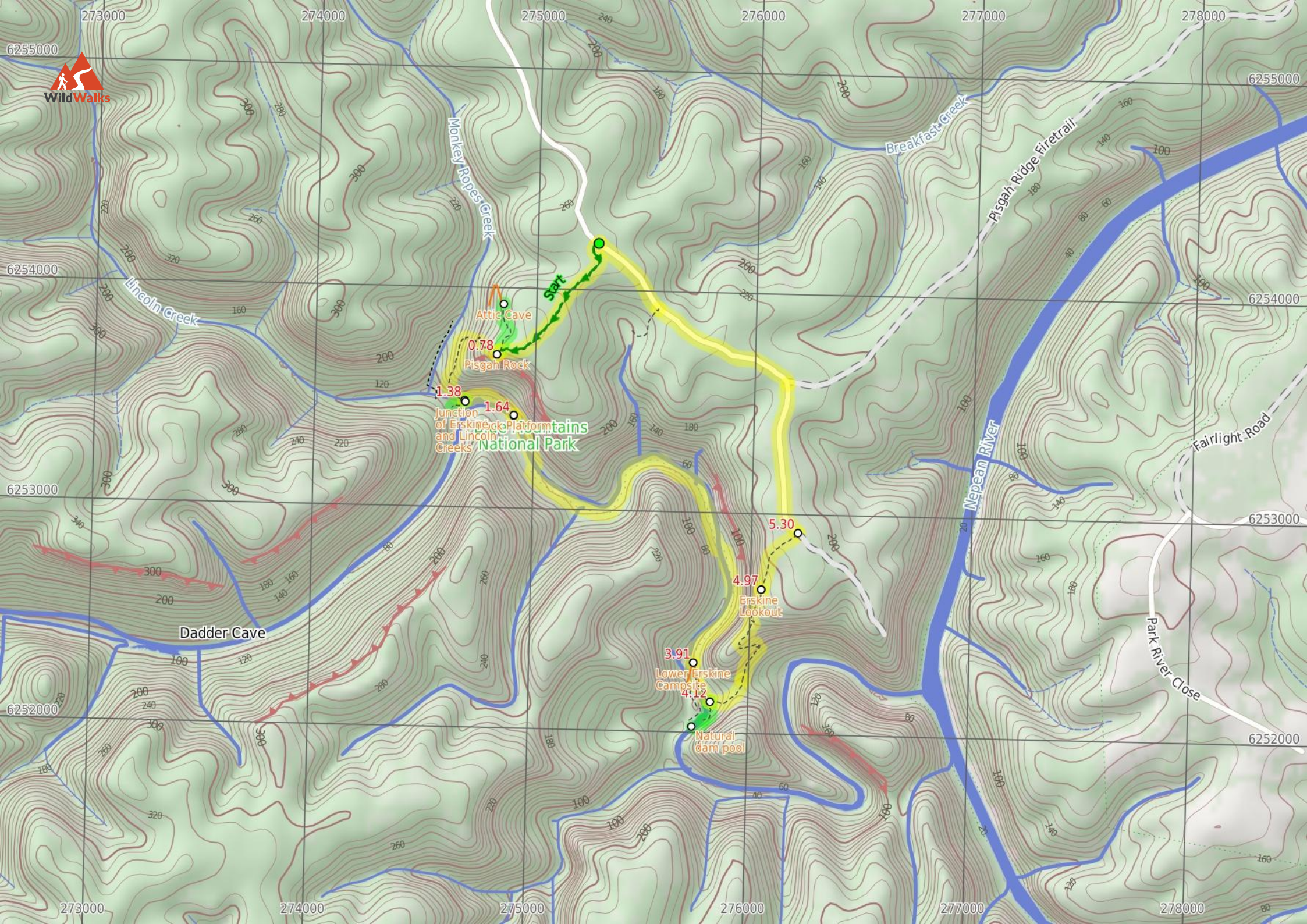
#### **5.3 | Car park at end of Nepean Lookout fire trail**

*(1.8 km 33 mins)* Turn left: From the end of end of Nepean Lookout fire trail, this walk follows the road northward away from the locked gate initially keeping the car park to the left. The road soon comes to an intersection with Pisgah Ridge fire trail (a gated management trail on the right).

Veer left: From the intersection, this walk follows Nepean Lookout fire trail north west around the left hand bend. The road soon comes to the Machins Crater car park.

Continue straight: From the Machins Crater car park, this walk follows Nepean Lookout fire trail north west, up the hill, initially with Machins Crater track on the left. The road heads up the hill and soon comes the Pisgah Rock track head and car park.





Junction of Erskine, Platformains and Lincoln Creeks National Park

Dadder Cave

Lower Erskine Campsite  
Natural dam pool

Erskine Lookout

Attic Cave

Pisgah Rock

Start

5.30

4.97

3.91

1.64

1.38

0.78

Breakfast Creek

Pisgah Ridge Firetrail

Nepean River

Fairlight Road

Park River Close

Lincoln Creek

Monkey Ropes Creek

273000

274000

275000

276000

277000

278000

6255000

6254000

6253000

6252000

6255000

6254000

6253000

6252000

273000

274000

275000

276000

277000

278000

## Summary navigation sheet for the Erskine Creek via Pisgah Rock and Jack Evans



km	From	Up/Dwn	Length	Initial directions (Use full tracknotes and maps for more detail)
Start	Pisgah Rock track head -33.8285,150.5717 (GR Penrith, 753542)	21 -17	760 m 14 mins	From the Pisgah Rock car park (2.2km further along Nepean Lookout Fire Trail from the Oaks Picnic Area), this walk follows the 'Pisgah Rock 700mt' sign along the old management trail.
0.76	Pisgah Rock Intersection -33.8329,150.5668 (GR Penrith, 748537)	13 -23	250 m 6 mins	Optional sidetrip to Attic Cave. Turn right: From the intersection, the walk follows the old management trail that very soon narrows into a bush track as it heads away from the view (keeping the valley to the left).
0.76	Pisgah Rock Intersection -33.8329,150.5668 (GR Penrith, 748537)	0 -5	20 m 1 mins	Veer left: From the intersection this walk takes the short bush track toward the view of the valley.
0.78	Pisgah Rock -33.833,150.5667 (GR Penrith, 748537)	18 -200	610 m 21 mins	Turn right: From the 'take care when walking near cliffs' signpost on Pisgah Rock this walk now follows the rock at the top of the cliff keeping the valley below to the left.
1.38	Junction of Erskine and Lincoln Creeks -33.8349,150.5651 (GR Penrith, 747535)	3 -4	70 m 2 mins	Optional sidetrip to Lower Lincoln Campsite. Turn right: From the intersection, this walk cross Lincoln Creek at the rock pools staying upstream of the small cascade (this may be impassable after rain).
1.38	Junction of Erskine and Lincoln Creeks -33.8349,150.5651 (GR Penrith, 747535)	22 -13	260 m 7 mins	Continue straight: From the intersection, this walk head downstream along Erskine Creek, keeping the creek to the right.
1.64	Rock platform -33.8355,150.5675 (GR Penrith, 749534)	98 -141	2.3 km 51 mins	Veer left: From the end of the rock platform, the walk heads downstream initially by following the rock fall on the northern bank.
3.91	Lower Erskine Campsite -33.8456,150.5763 (GR Penrith, 757523)	4 -2	110 m 2 mins	Continue straight: From the campsite this walk heads down stream keeping the creek to the right.
4.02	Int of Jack Evans Track and Erskine Creek -33.8466,150.5765 (GR Penrith, 758522)	6 -5	100 m 2 mins	Turn left: From the intersection just above sandy beach on the creek, this walk follows the clear bush track away from the creek and up the gentle hill.
4.12	Int of Jack Evans and the lower Erskine tracks -33.8472,150.5771 (GR Penrith, 758521)	30 -17	180 m 7 mins	Optional sidetrip to Eastern side of natural dam wall. Turn right: From the intersection, this walk follows the wider bush track down hill keeping the sound of Erskine Creek to the right, soon the creek is in view.
4.12	Int of Jack Evans and the lower Erskine tracks -33.8472,150.5771 (GR Penrith, 758521)	172 -28	850 m 31 mins	Veer left: From the intersection this walk follows the wider bush track up the hill past the large gum tree.
4.97	Erskine Lookout -33.8426,150.5797 (GR Penrith, 761527)	29 -1	320 m 8 mins	Continue straight: From Erskine Lookout, this walk heads up the gentle hill, following the sandy track, keeping the view to the left.
5.30	Car park at end of Nepean Lookout fire trail -33.8403,150.5815 (GR Penrith, 762529)	51 -9	1.8 km 33 mins	Turn left: From the end of end of Nepean Lookout fire trail, this walk follows the road northward away from the locked gate initially keeping the car park to the left.